



Clay Tablet™
TECHNOLOGIES

Making Translation EASY
How to achieve translation
efficiency through integration



What is Clay Tablet 2.5?



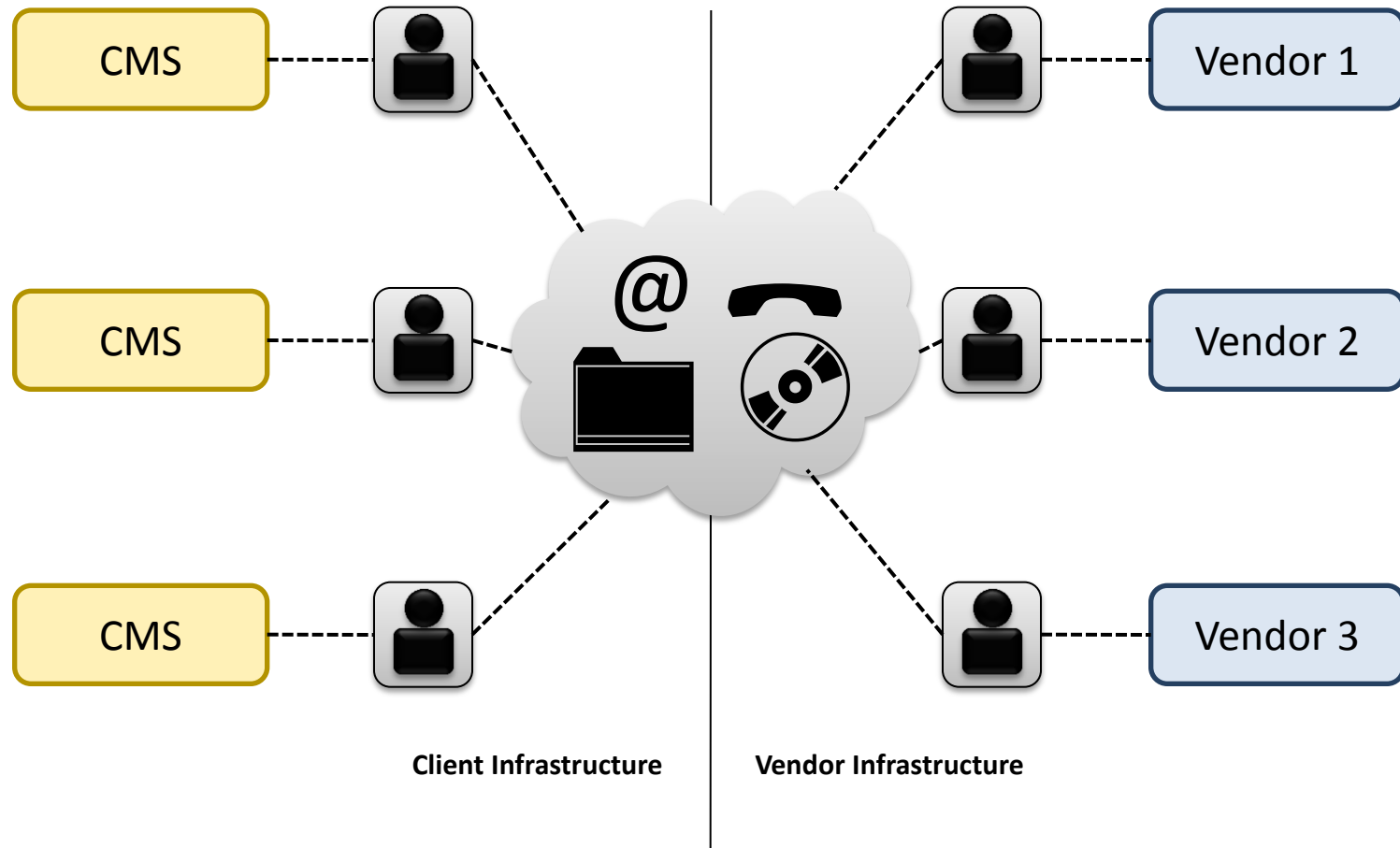
Clay Tablet 2.5 is connectivity software that connects content systems to translation systems and technologies



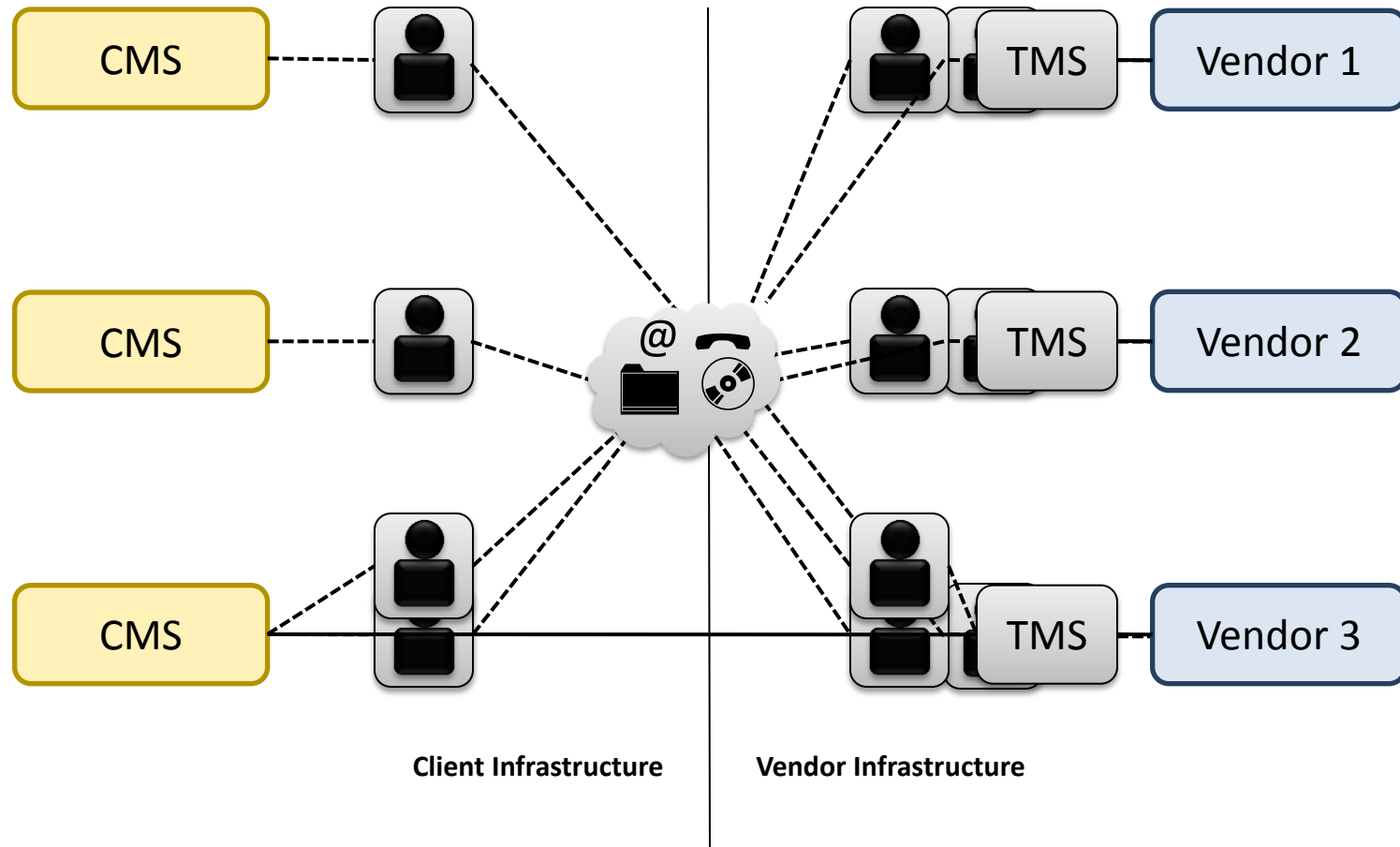
The Challenge Today: A Manual Process



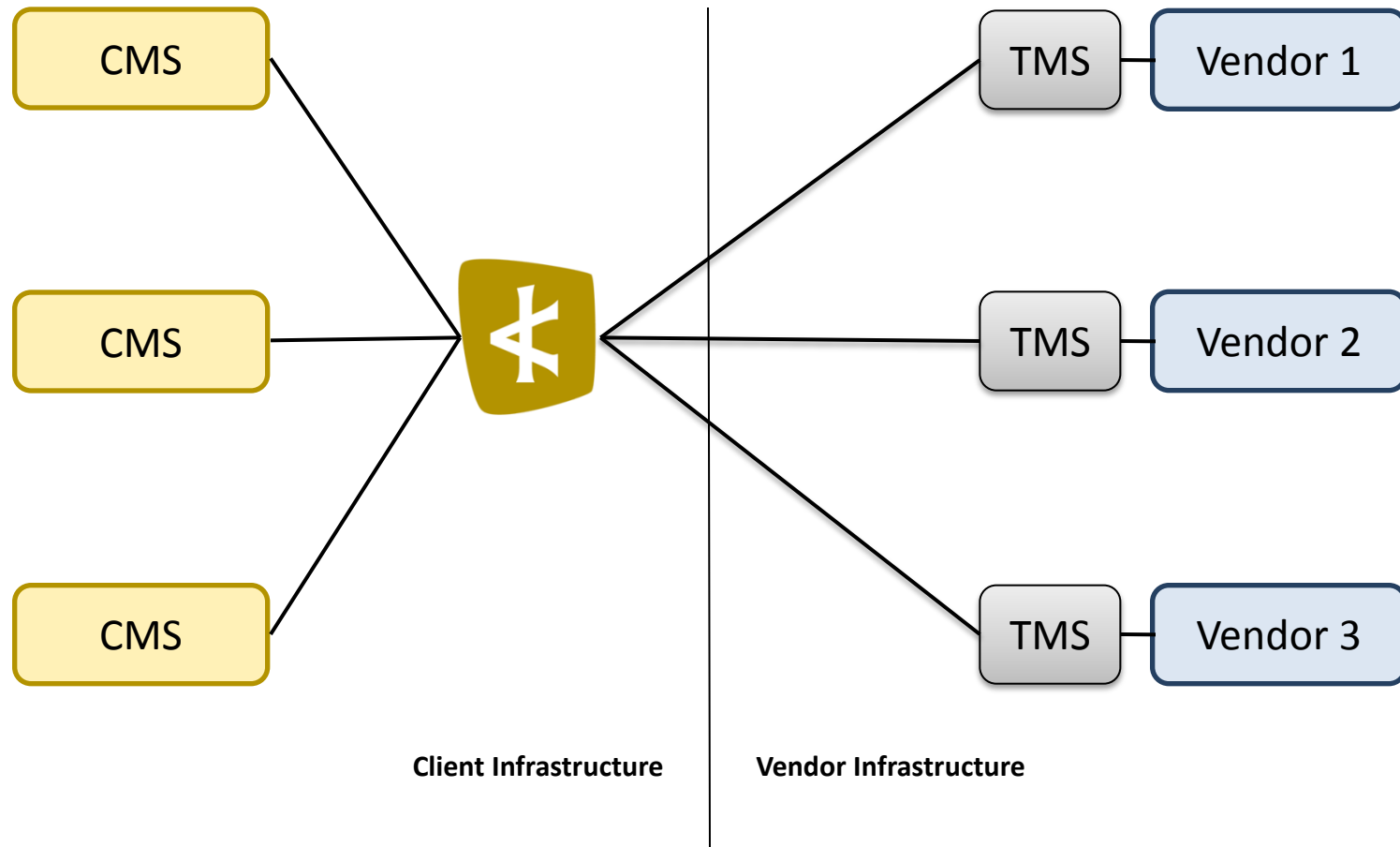
Currently, over 90% of content is sent for translation manually*



The Challenge Today: Increasing Complexity



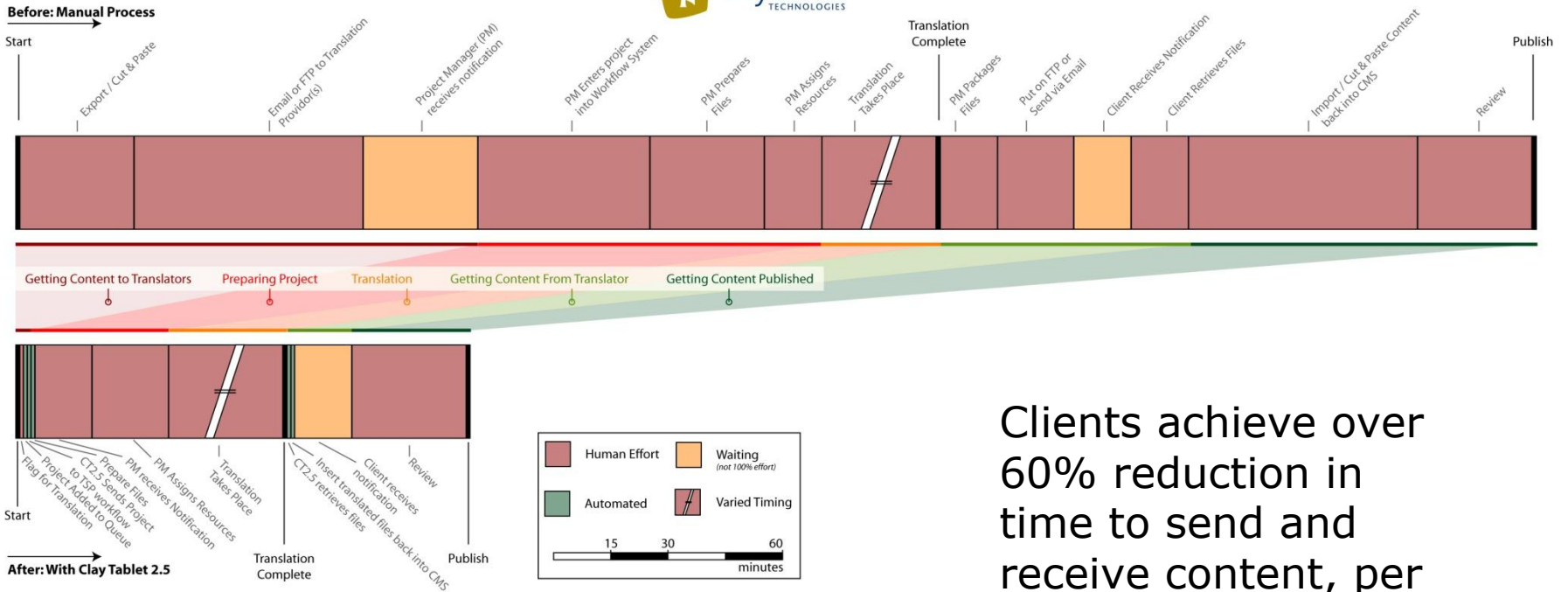
The CT2.5 Solution: Automated, efficient, secure



Dramatically Reduce Effort



Bringing Efficiency to the Translation Lifecycle

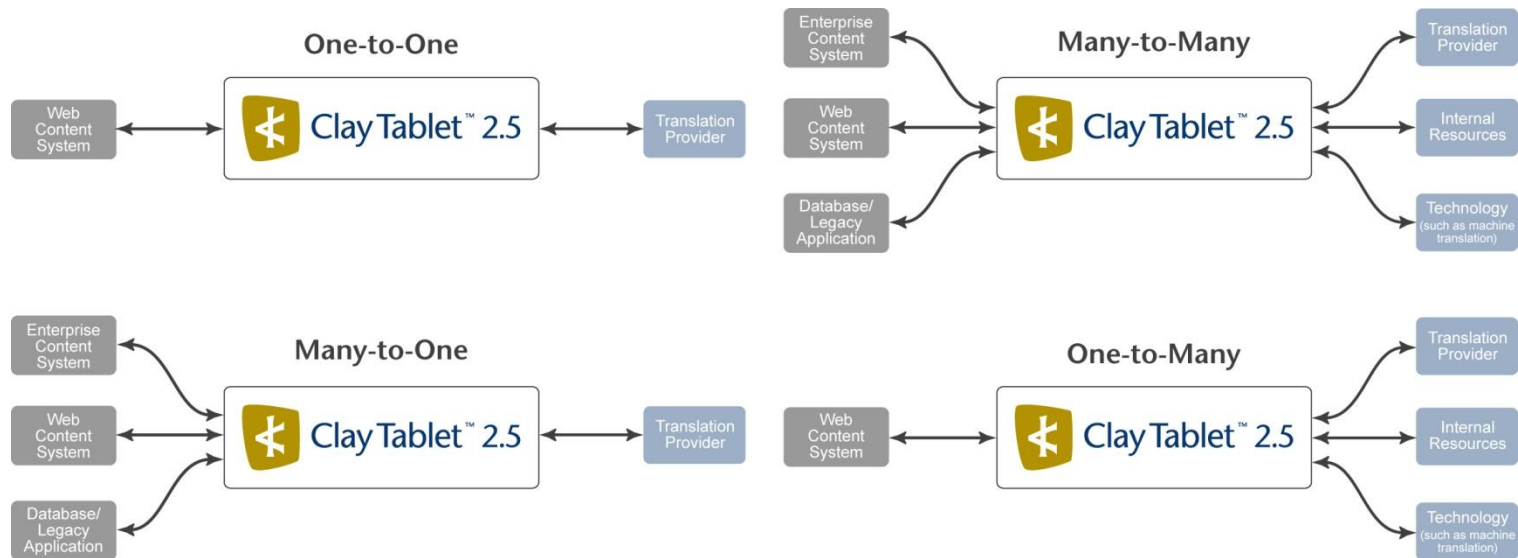


Clients achieve over 60% reduction in time to send and receive content, per language

Flexible and Open to Meet Every Need



Clay Tablet fits any business, grows with you



Automatic, Rules-based Routing



Control the flow, control costs



Project Automatically Appears in TMS



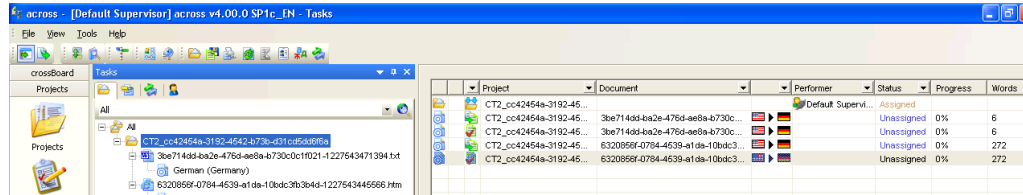
The screenshot shows the 'crossBoard' application window. The main window title is 'across - [Default Supervisor] across v4.00.0 SP1c_EN - Projects'. The interface includes a menu bar (File, View, Tools, Help), a toolbar, and a sidebar with icons for 'Quality management', 'Styles', 'Archive', and 'crossGrid'. The main area is divided into two sections. The top section displays a table of projects, with one row highlighted in blue. An orange box highlights this row, and a red arrow points to the 'Project ID' column. The bottom section displays a detailed view of the selected project, including a table of documents and a toolbar with buttons like 'Add Document...', 'Properties...', 'Delete', 'Update...', 'Check-Out...', and 'Partition...'.

| Project ID | Name | Relation | Progress | Status | ▲ Fi... | Description |
|------------|--|-----------------|-------------------|-----------------------|-----------|-------------|
| 65 | CT2_cc42454a-3192-4542-b73b-d31cd5d... | Product Group 1 | 0% (0 of 278 W... | 0 of 2 Document(s)... | 05/01/... | |

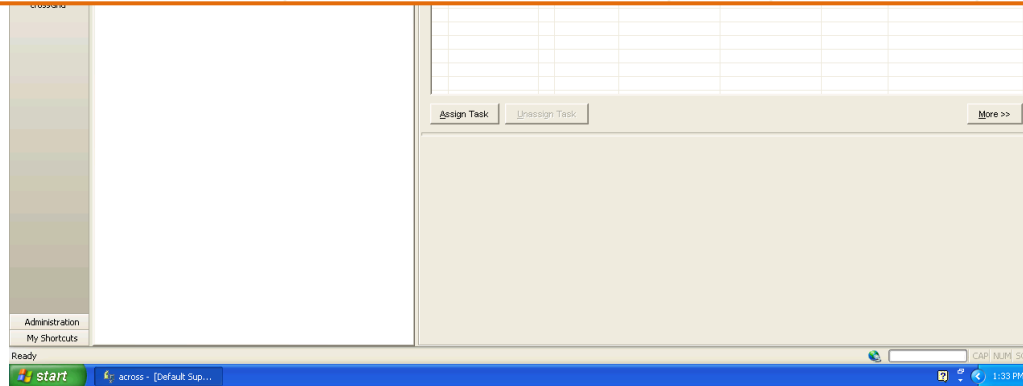
| Name | Language | Progress | Status | Deadline | Description |
|----------------------|----------|----------------------|-------------------|------------|-------------|
| 3be714dd-ba2e-476... | | 0% (0 of 6 Words.) | 0 of 1 Languag... | 08/12/2008 | |
| 6320866f-0784-453... | | 0% (0 of 272 Words.) | 0 of 1 Languag... | 08/12/2008 | |



Project Automatically Appears in TMS



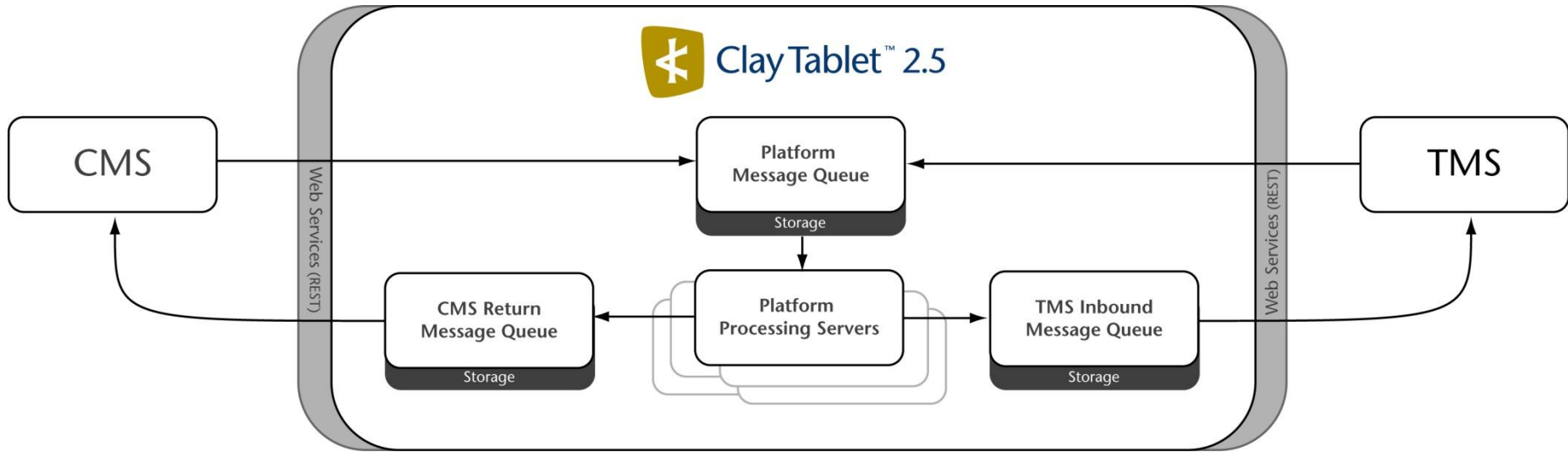
| | Project | Document | Performer | Status | Progress | Words |
|--|-------------------------|-----------------------------------|--------------------|------------|----------|-------|
| | CT2_cc42454a-3192-45... | | Default Supervi... | Assigned | | |
| | CT2_cc42454a-3192-45... | 3be714dd-ba2e-476d-ae8a-b730c... | | Unassigned | 0% | 6 |
| | CT2_cc42454a-3192-45... | 3be714dd-ba2e-476d-ae8a-b730c... | | Unassigned | 0% | 6 |
| | CT2_cc42454a-3192-45... | 6320856f-0784-4539-a1da-10bdc3... | | Unassigned | 0% | 272 |
| | CT2_cc42454a-3192-45... | 6320856f-0784-4539-a1da-10bdc3... | | Unassigned | 0% | 272 |



Reduce Project Management costs at both ends



Architecture Overview



Fast, Easy, Reliable re-importing of Content



MultiPoint Routing





Clay Tablet™
TECHNOLOGIES

*The easiest way to connect
Content Systems to
Translation Systems*



Questions?